



KING'S HARBOUR MASTER CLYDE

DIRECTION No 03/24

APPROVAL FOR SELECTED CRAFT TO OPERATE AT HIGH SPEED WITHIN THE CLYDE DOCKYARD PORT

References

A: Clyde Dockyard Port of Gareloch and Loch Long Order 2011.

Introduction

1. Mariners are advised that the King's Harbour Master Clyde has made the following General Direction under the Clyde Dockyard Port of Gareloch and Loch Long Order 2011.
2. Following publication of the Clyde Dockyard Port of Gareloch and Loch Long Order 2011, and a subsequent period of research and consultation Ministry of Defence Clyde Marine Unit (MDP CMU) craft are authorised to conduct patrols above the speed limit, in specifically designated areas of the Clyde Dockyard Port.
3. This has been agreed to facilitate an operational security need and to conduct Police marine training required by CMU officers in their security role. It also covers those occasions when there is a requirement to conduct patrol launch sea trials or other approved operations. The CMU has conducted comprehensive risk assessments for all tasks within the Dockyard Port which fall within the remit of this General Direction.

Patrol Speeds

4. CMU RHIBs are permitted to conduct patrols at the speed limits shown below in the Faslane areas specifically designated by Annex A:
 - a. Faslane North and South Basin – no more than 3 knots.
 - b. Faslane Protected Area up to the northern end of the boom – no more than 7 knots.
 - c. Faslane Restricted Area, heading north then west to the west side of the Gareloch down to adjacent to KHM Harbour Control, then heading east towards Sierra buoy until 100 m off Sierra Buoy - no more than 15 knots.
5. CMU RHIBs are permitted to conduct patrols at the speed limits shown below in the Coulport and Glen Mallan areas specifically designated by Annex's B and C:
 - a. Up to 15-20 knots within the waterfront Protected and Restricted areas when there are no other vessels operating in the vicinity.
 - b. When there are other vessels operating in the vicinity, CMU RHIBs must comply with the Clyde Dockyard Port speed limits within the Protected and Restricted area.

Trials / Training Speed Area

6. A specific 'high speed' area for CMU and 43Cdo sea trials, training and special operations has been established in the Gareloch (Annex C) and Loch Long (Annex D).
7. Craft may only proceed at high speeds in this area with the specific permission of the KHM Harbour Controller. Vessels wishing to use this area for high-speed trials, training or special operations are to request permission from the KHM Harbour Controller on VHF Channel 73 prior to commencing and inform the KHM Harbour Controller on completion.
8. Units are additionally required liaise with the Assistant King's Harbour Master or the KHM Harbour Planning Office whenever possible to programme in such activity a minimum of 48 hours before the event. A Risk Assessment for the activity must be provided to KHM prior to permission being granted. For 43Cdo and CMU, this may be in the form of a generic Risk Assessment which is updated annually. Any other unit or organisation wishing to conduct such work must present a specific Risk Assessment to KHM upon initial application.
9. These areas are only to be for speeds above that authorised by the Dockyard Port Order by CMU, 43Cdo or other units specifically authorised by KHM. The Coxswain of the vessel retains full responsibility for the safe conduct of their vessel at all times.

CMU Emergency Response

10. At any time when responding to an emergency incident, all CMU Police vessels have a caveat to operate at speed, if deemed absolutely

necessary, provided the Coxswain has due regard to the prevailing circumstances and conditions and observance of good seamanship. On such occasions appropriate emergency signals must be displayed.

Speeding Licence Application Process

- 11. Any person requiring to exceed the above speed limits for specific reasons should apply to the Assistant King's Harbour Master for a [KHM Speeding Licence](#) via the [KHM Clyde website](#).
- 12. This General Direction will be reviewed by 06 Jan 25.

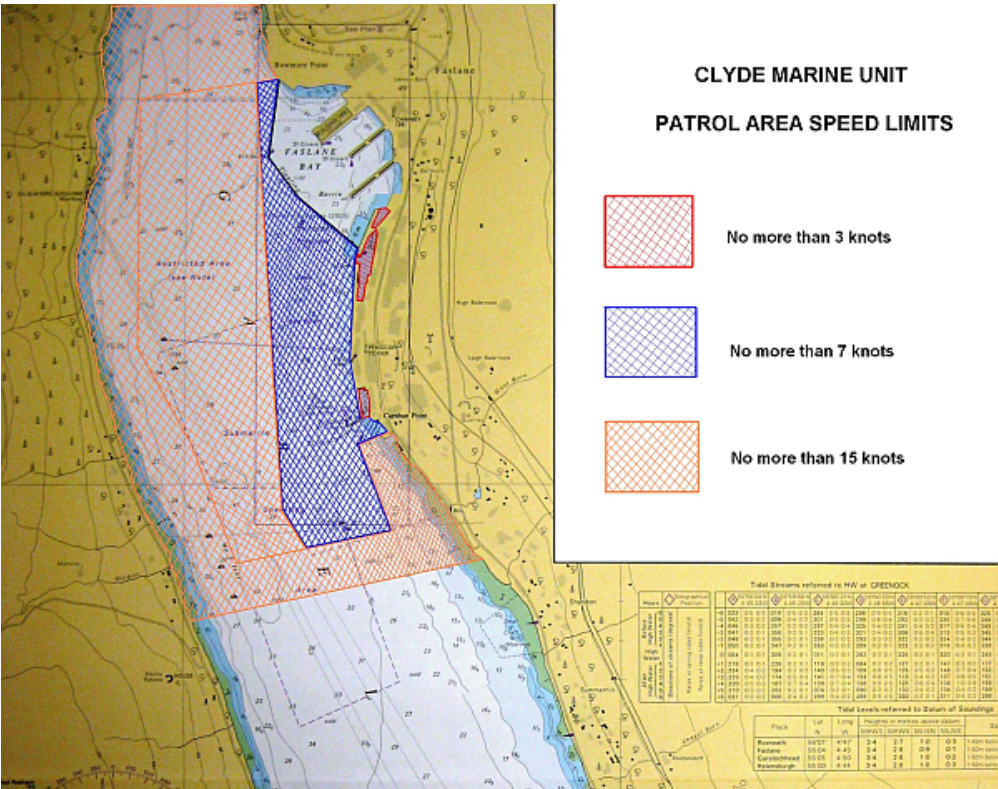
Annexes:

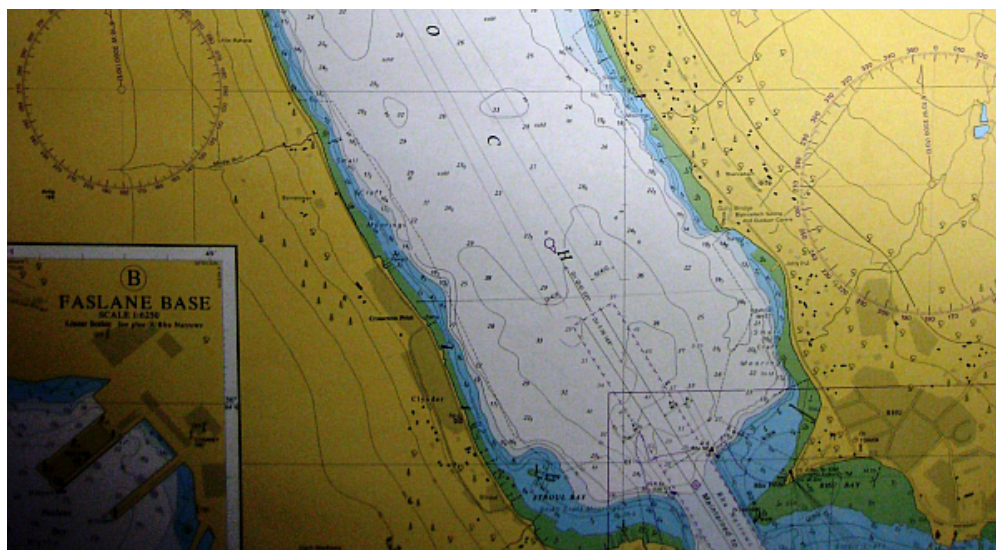
- A. Chartlet showing approved speeds for CMU patrol areas at Faslane.
- B. Chartlet showing approved speeds for CMU patrol areas at Coulport.
- C. Chartlet showing approved speeds for CMU patrol areas at Glen Mallan.
- D. Chartlet showing approved area for vessels training and conducting special ops at speed in the Gareloch.
- E. Chartlet showing approved area for vessels training and conducting special ops at speed in Loch Long.

Annexes:

- A. Chartlet showing approved speeds for CMU patrol areas at Faslane.
- B. Chartlet showing approved speeds for CMU patrol areas at Coulport.
- C. Chartlet showing approved speeds for CMU patrol areas at Glen Mallan.
- D. Chartlet showing approved area for vessels training and conducting special ops at speed in the Gareloch.
- E. Chartlet showing approved area for vessels training and conducting special ops at speed in Loch Long.

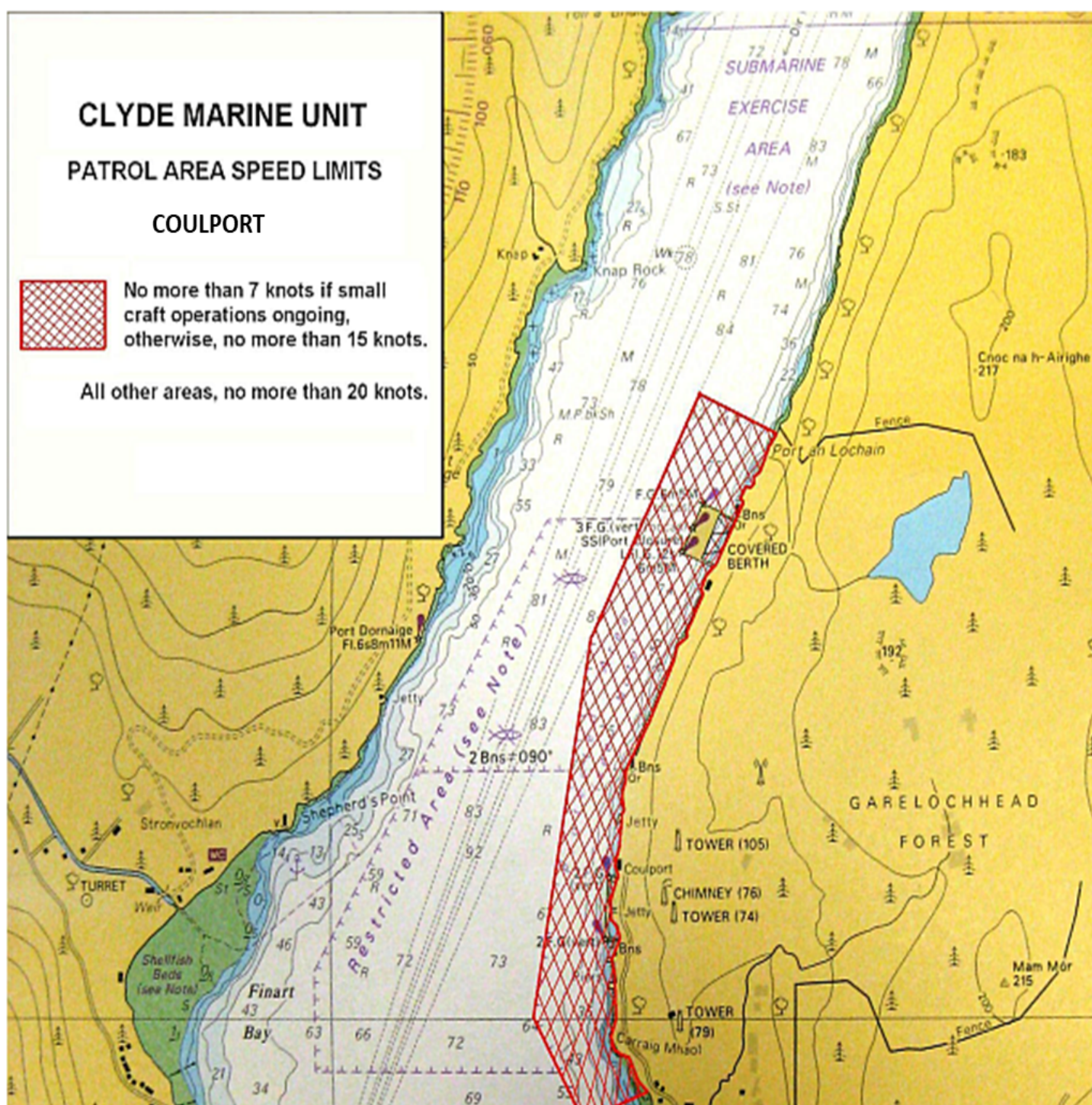
**ANNEX A
CHARTLET SHOWING APPROVED SPEEDS FOR CMU PATROL AREAS AT FASLANE**

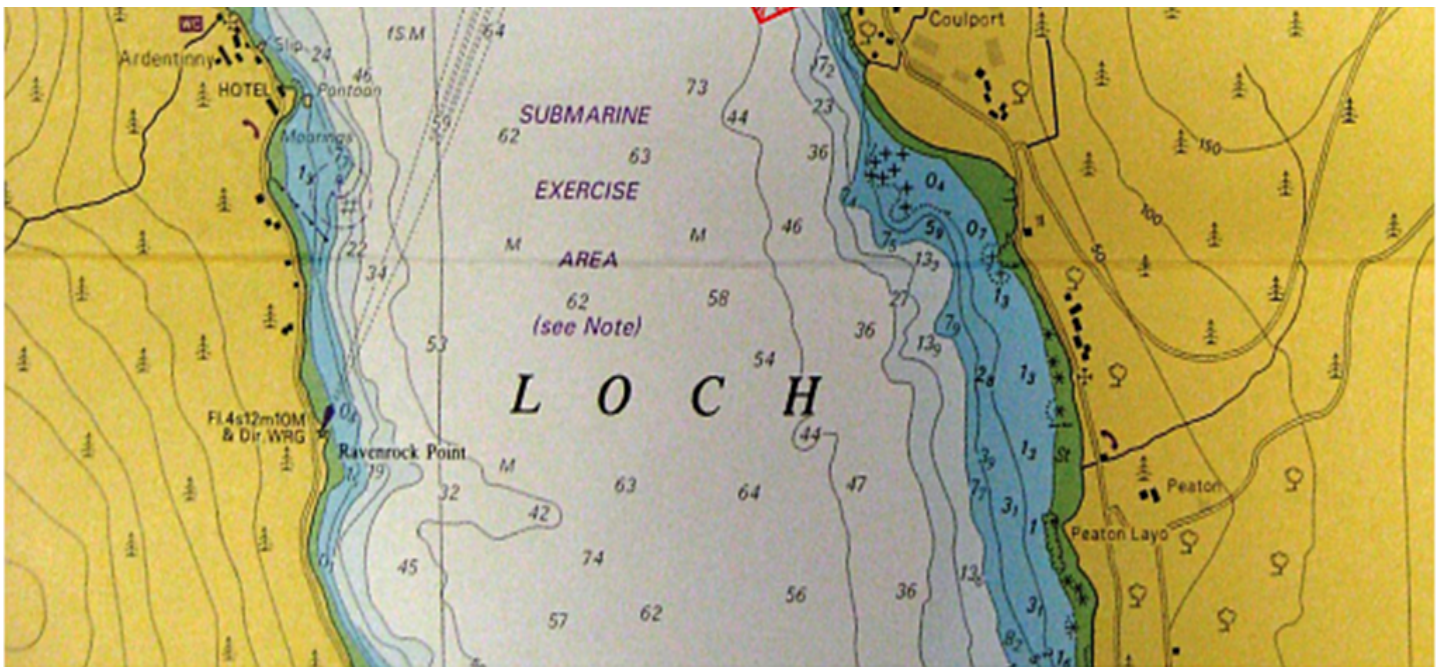




ANNEX B

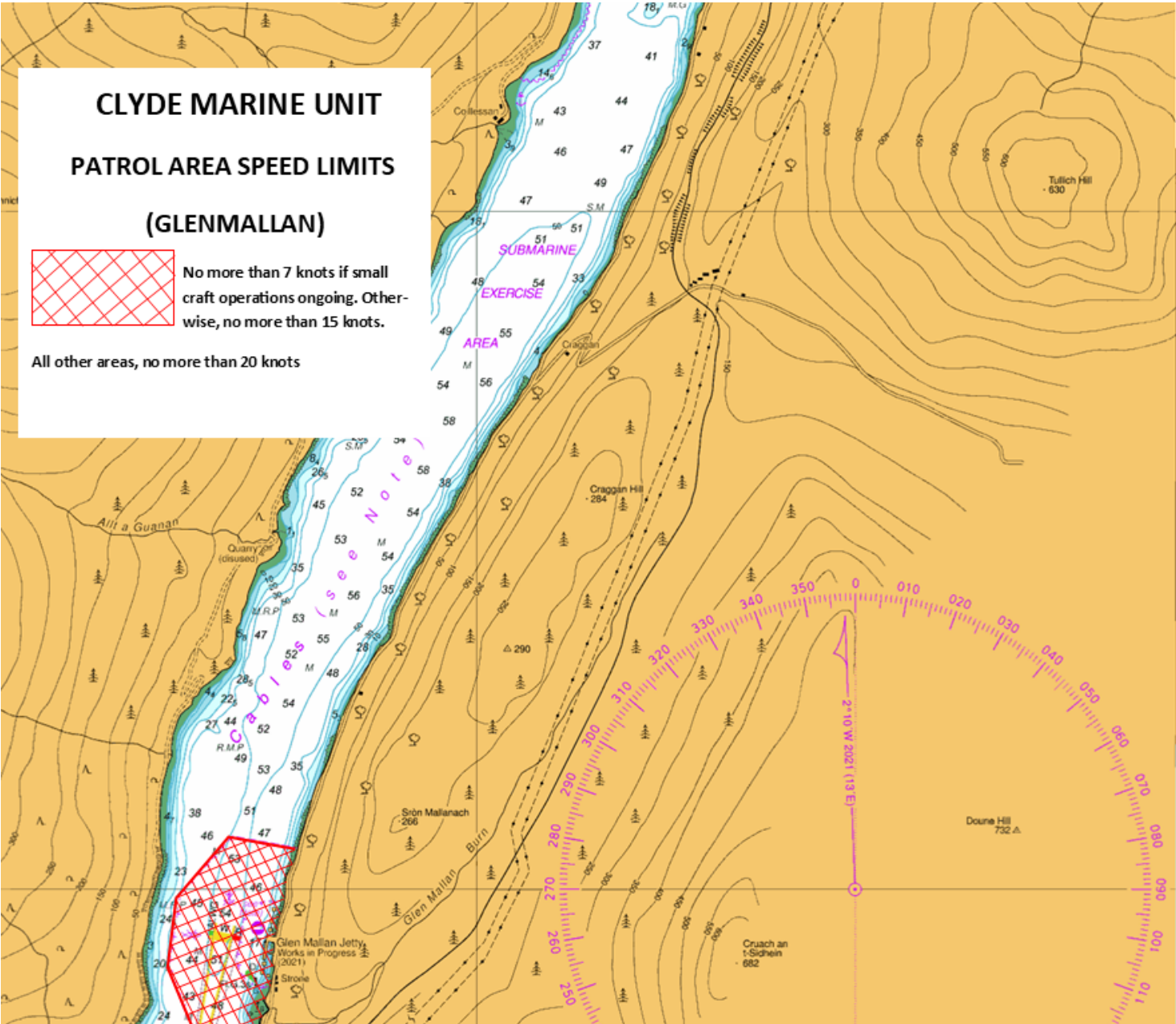
CHARTLET SHOWING APPROVED SPEEDS FOR CMU PATROL AREAS AT COULPORT

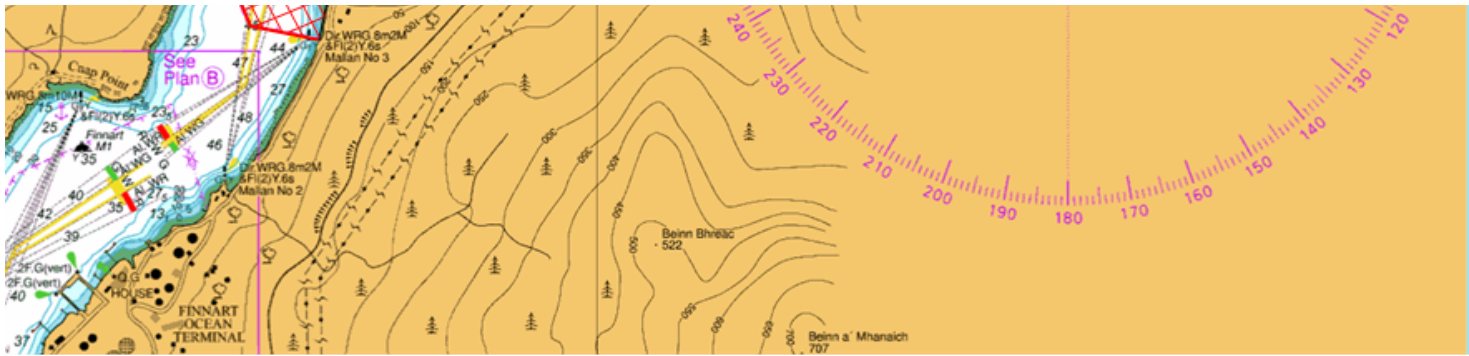




ANNEX C

CHARTLET SHOWING APPROVED SPEEDS FOR CMU PATROL AREAS AT GLEN MALLAN





ANNEX D

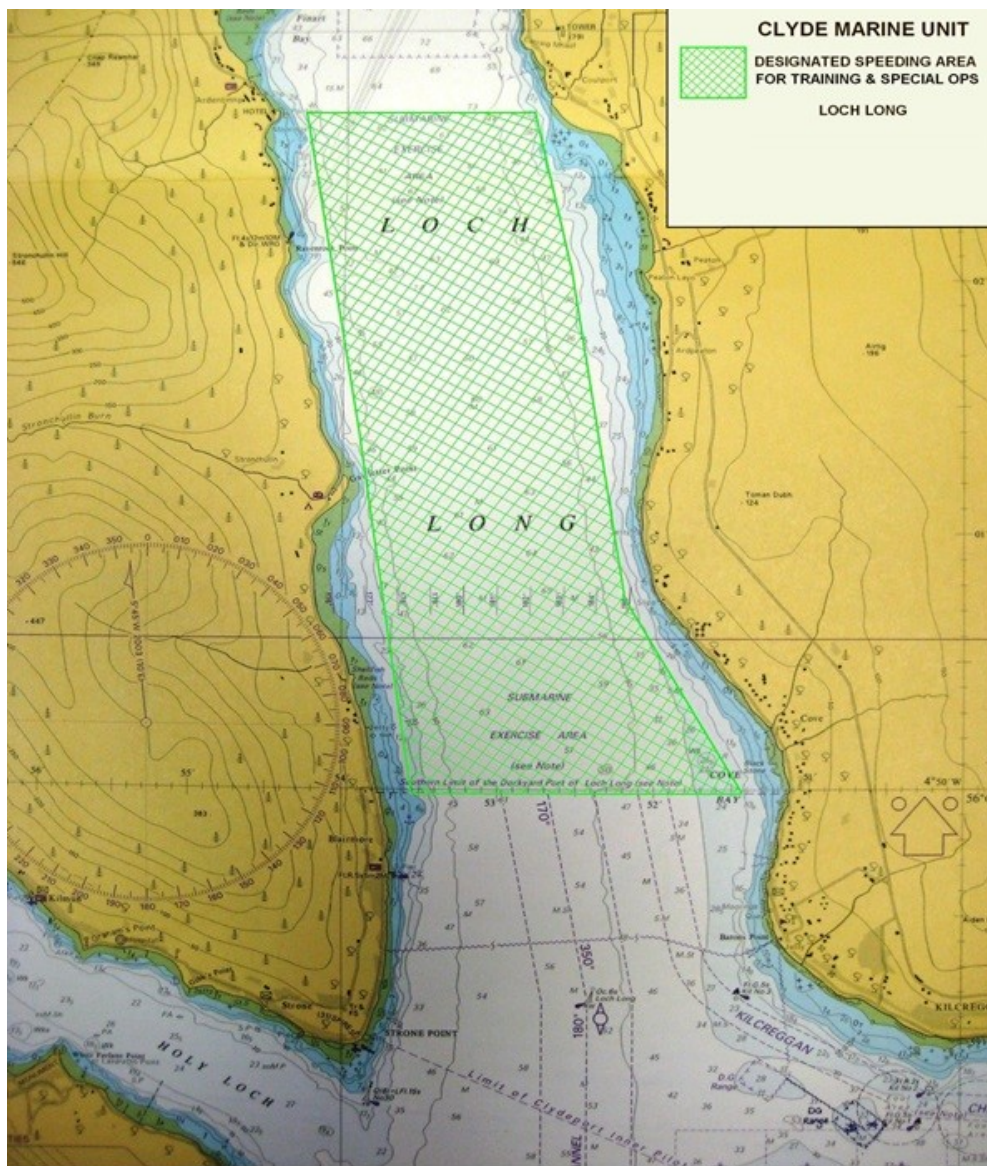
CHARTLET SHOWING APPROVED AREA FOR VESSELS TRAINING AND CONDUCTING SPECIAL OPS AT SPEED IN THE GARELOCH



ANNEX E

CHARTLET SHOWING APPROVED AREA FOR VESSELS TRAINING AND CONDUCTING SPECIAL OPS AT SPEED IN THE LOCH LONG





King's Harbour Master

Renown Building

HM Naval Base Clyde

<http://www.royalnavy.mod.uk/qhm/clyde/local-notice>

Monday 01 Jan 2024

Ian White

King's Harbour Master Clyde