



KING'S HARBOUR MASTER PORTSMOUTH

LNTM No 37/24

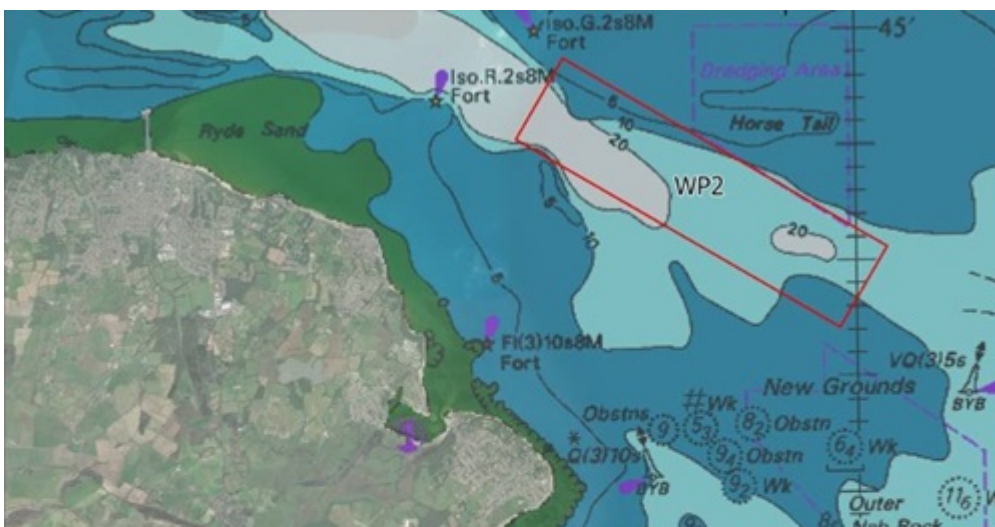
SURVEY OPERATIONS OFF EASTERN SIDE OF ISLE OF WIGHT 13 JANUARY – 29 FEBRUARY 2024 RE-ISSUED

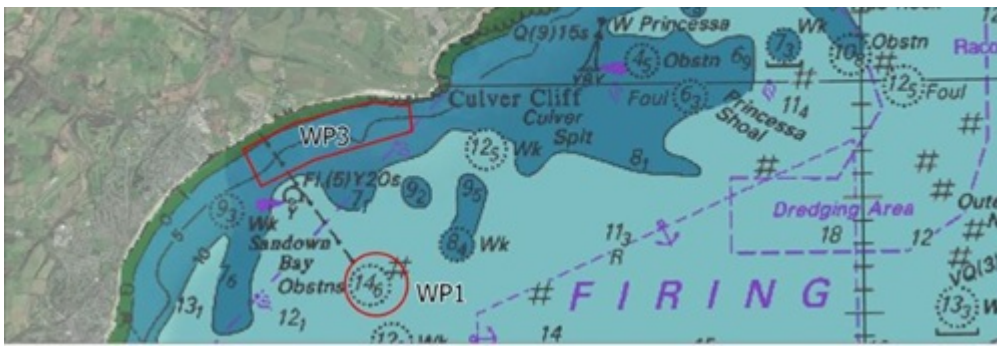
1. **NOTICE IS HEREBY GIVEN** by the King's Harbour Master Portsmouth that minor Water Recycling Plant Geophysical & Environmental Surveys operations will be conducted in the vicinity of St Helen's Road Anchorages and Sandown Bay on the Eastern side of the Isle of Wight between 13 January – 29 February 2024 (Day light hours only).
2. The contractor for these minor survey works will be Ocean Ecology Limited using their vessel "**SEREN LAS**" (LOA 10.0m) Call sign "MDAH2" that equipment will be deployed from the vessel when static in the water. The vessel will display the appropriate signals when conducting survey operations.



SEREN LAS

3. The survey works will focus on the three locations highlighted in the graphic below:





4. Mariners are requested to keep a good lookout and pass at slow speed while surveying operations are being conducted. The survey craft will maintain a listening watch on VHF Ch 11 throughout operations.
5. KHM Harbour Control will be kept informed of work in progress and will de-conflict movements with other marine traffic. They can be contacted on VHF Ch 11 or by telephoning 02392 723689 for the latest information.
6. Cancel this LNTM on 1 March 2024.

Monday 26 Feb 2024

N J RANDALL
King's Harbour Master

Owners, Agents, Charterers, Marinas, Yacht Clubs and Recreational Sailing Organisations should ensure that the contents of this Notice are made known to the masters or persons in charge of their vessels or craft.